

# Investor Information

## Composition of Stockholders (as of 31st March, 2003)

|                                 |                    |                |
|---------------------------------|--------------------|----------------|
| Financial Institutions          | 40,334,870         | 30.05%         |
| Securities Companies            | 424,154            | 0.32%          |
| Other Japanese Corporations     | 72,574,161         | 54.08%         |
| Foreign Investors               | 6,462,663          | 4.82%          |
| Japanese Individuals and Others | 14,395,778         | 10.73%         |
| <b>Total</b>                    | <b>134,191,626</b> | <b>100.00%</b> |

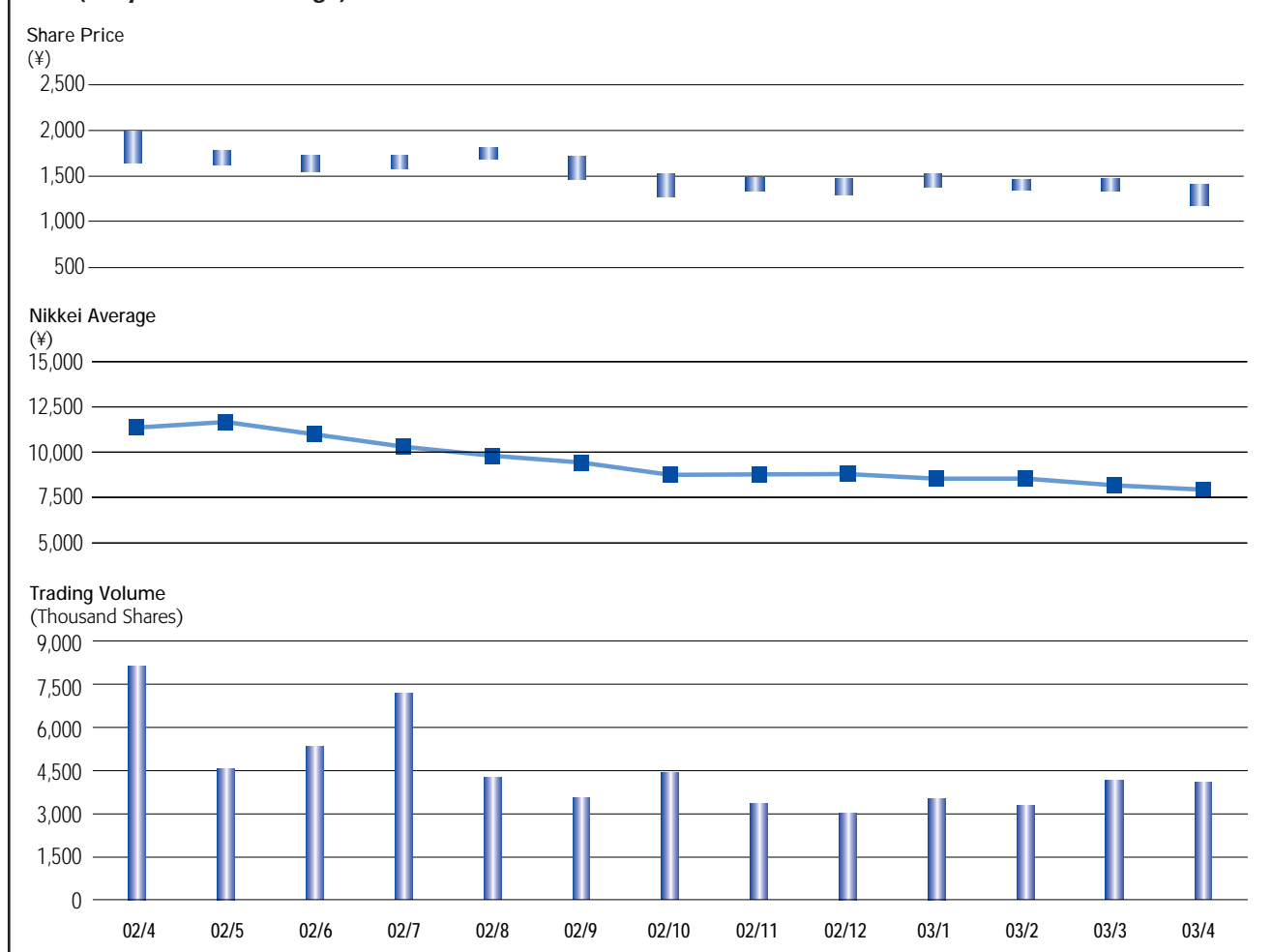
## Number of Shares Owned (as of 31st March, 2003)

|                   |                    |                |
|-------------------|--------------------|----------------|
| Less than 100     | 5,913              | 0.01%          |
| 100 or more       | 1,556,256          | 1.16%          |
| 1,000 or more     | 6,157,315          | 4.59%          |
| 10,000 or more    | 5,880,846          | 4.38%          |
| 100,000 or more   | 11,180,241         | 8.33%          |
| 1,000,000 or more | 109,411,055        | 81.53%         |
| <b>Total</b>      | <b>134,191,626</b> | <b>100.00%</b> |

## Major Stockholders (as of 31st March, 2003)

|   | Number of shares held | Percentage of shares held |
|---|-----------------------|---------------------------|
| Hitachi, Ltd.                                   | 67,246                | 50.11%                    |
| The Master Trust Bank of Japan, Ltd.            | 8,787                 | 6.55%                     |
| Trust & Custody Services Bank, Ltd.             | 7,749                 | 5.77%                     |
| Japan Trustee Services Bank, Ltd.               | 7,584                 | 5.65%                     |
| Hitachi High-Technologies Corporation           | 2,525                 | 1.88%                     |
| Mitsui Asset Trust and Banking Company, Limited | 2,164                 | 1.61%                     |
| The Norinchukin Trust & Banking Co., Ltd.       | 1,660                 | 1.24%                     |
| UFJ Trust Bank Limited                          | 1,588                 | 1.18%                     |
| Nikko Citi Trust and Banking Corporation        | 1,311                 | 0.98%                     |
| SOMPO JAPAN INSURANCE INC.                      | 1,241                 | 0.93%                     |

## (Tokyo Stock Exchange)



 **Hitachi Capital Corporation**

15-12, Nishi Shimbashi 2-chome  
Minato-ku, Tokyo 105-8712, Japan  
Phone: +81-3-3503-2111  
<http://www.hitachi-capital.co.jp/>